

ECO HOME LIFT



SIYAKHULA
ELEVATORS





ECO HOME LIFT

A truly economical solution offering low energy consumption, space saving and simple installation. With many personalisation options to suit all tastes our ECO Home Lift can be a great addition to provide access to any residential or commercial space.



SPEED : 0.15 M/S

The ECO Lift offers smooth consistent speed between floors and is in conformity with machinery directive 2006/42/CE.



LOW PIT & HEADROOM REQUIREMENTS

Pit required can be as low as 120mm* or ramp can be provided. Minimum headroom from the top floor FFL can be an industry leading 2270mm*.



TRACTION & HYDRAULIC DRIVE OPTIONS

Drive options that are suited to the user and building requirements. We work with you to provide the best option.



RATED LOAD: UP TO 600KG *

Different drive options offer the opportunity to increase capacity of our ECO Lift for the most intensive uses.



TRAVEL: 5 STOPS (14.6M) *

Suitable for most residential and public spaces with a simple, fast installation.



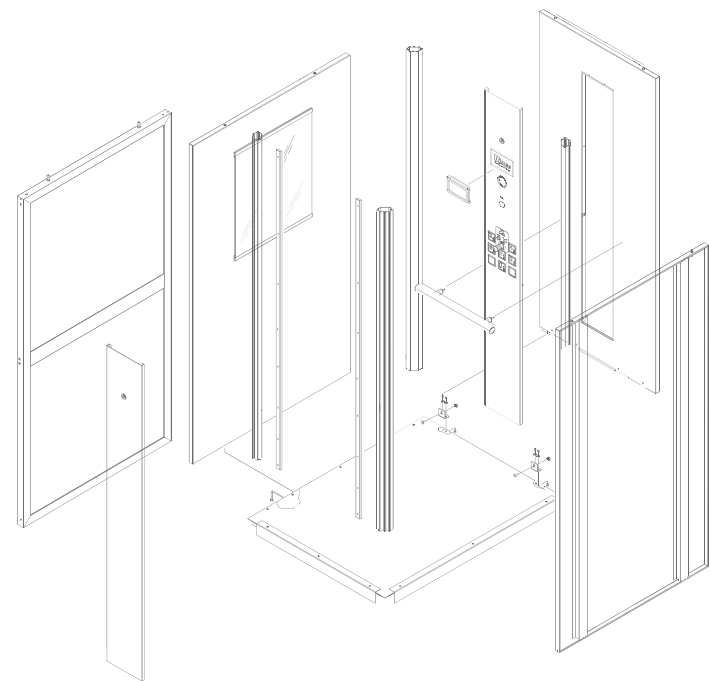
MEETS ALL LEGISLATION REQUIREMENTS

All of our products comply with Europe's strictest safety requirements. Ensuring safety with the latest EC directives and exceeds local SANS 1545-4 regulations.

* These are possible min/max values, certain drive and building requirements may limit values. See brochures technical pages or contact a sales specialist for more information.



THE DESIGN OF THE ECO LIFT



ADD PERSONALITY WITH A RANGE OF FINISHING OPTIONS

With options such as LED Lighting, and stainless steel and glass structures it will harmonise with any building, whether traditional or modern. The lift also has an array of non-standard custom finishes to choose from, and over 100 different configurations are possible.



CABINS DESIGNED FOR WHEELCHAIR ACCESS

Our cabins are designed with ergonomics that suit disability access in any public space. With considered control placement and braille descriptions.



CLEAR LCD DISPLAYS

Bright, sharp LCD displays available for the landing / cabin controls.



STRUCTURES FOR INDOOR AND OUTDOOR USE

Our lifts can be provided with highly customisable structures. They are modular in design with different types of glass panelling to suit installations of all kinds and provide support when masonry work is unavailable. Our skilled engineering team ensures installation is completed quickly with great care to the surrounding environment.



EASY TO FOLLOW & COMPREHENSIVE DRAWING PACK WITH ALL OF OUR PRODUCTS

Our visual site-specific drawing pack has been developed to provide clear instructions on how to prepare the site for our installation and give an understanding of the critical dimensions we need approval

The drawing packs cover the following:

- Lift dimensions
- Shaft dimensions
- Forces and loading details
- Electrical Requirements
 - Fixing points
- Doors dimensions and fixing points
 - Cabin and door finishes





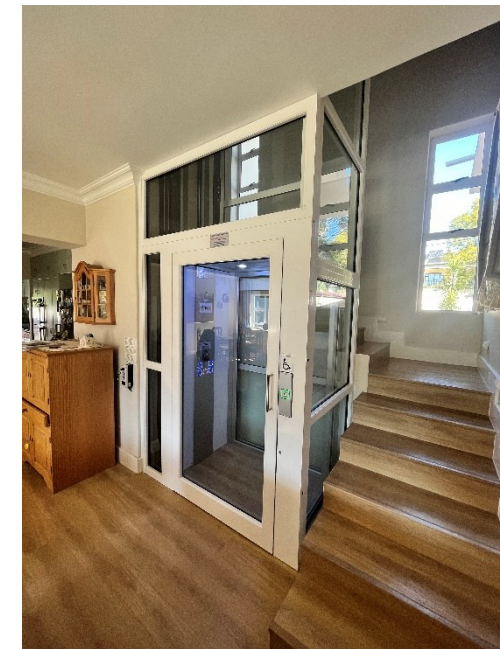
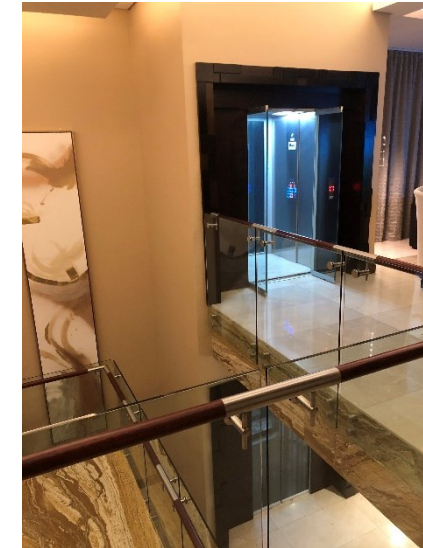
SIMPLE INSTALLATION

Installation is simple as building work is minimal, just a low pit is required, and headroom requirements are very low. We work to provide a speedy installation, with minimal interference to your building or the surrounding area, making sure that you get to carry on with your daily life.

INSTALLATIONS ACROSS SOUTH AFRICA

Siyakhula Elevators will provide you with a customer related project approach to ensure a swift and tidy installation, we strive to ensure that all your requirements and ideas are reflected in the finished product.

CE EN 81-41
2006/42/CE



SERVICING & WARRANTY

Siyakhula Elevators offer a 12 month warranty (including parts) with service visits monthly, quarterly or bi-annually as standard. For extended warranty options and more information please contact our sales team.



BOOK A NO OBLIGATION CONSULTATION

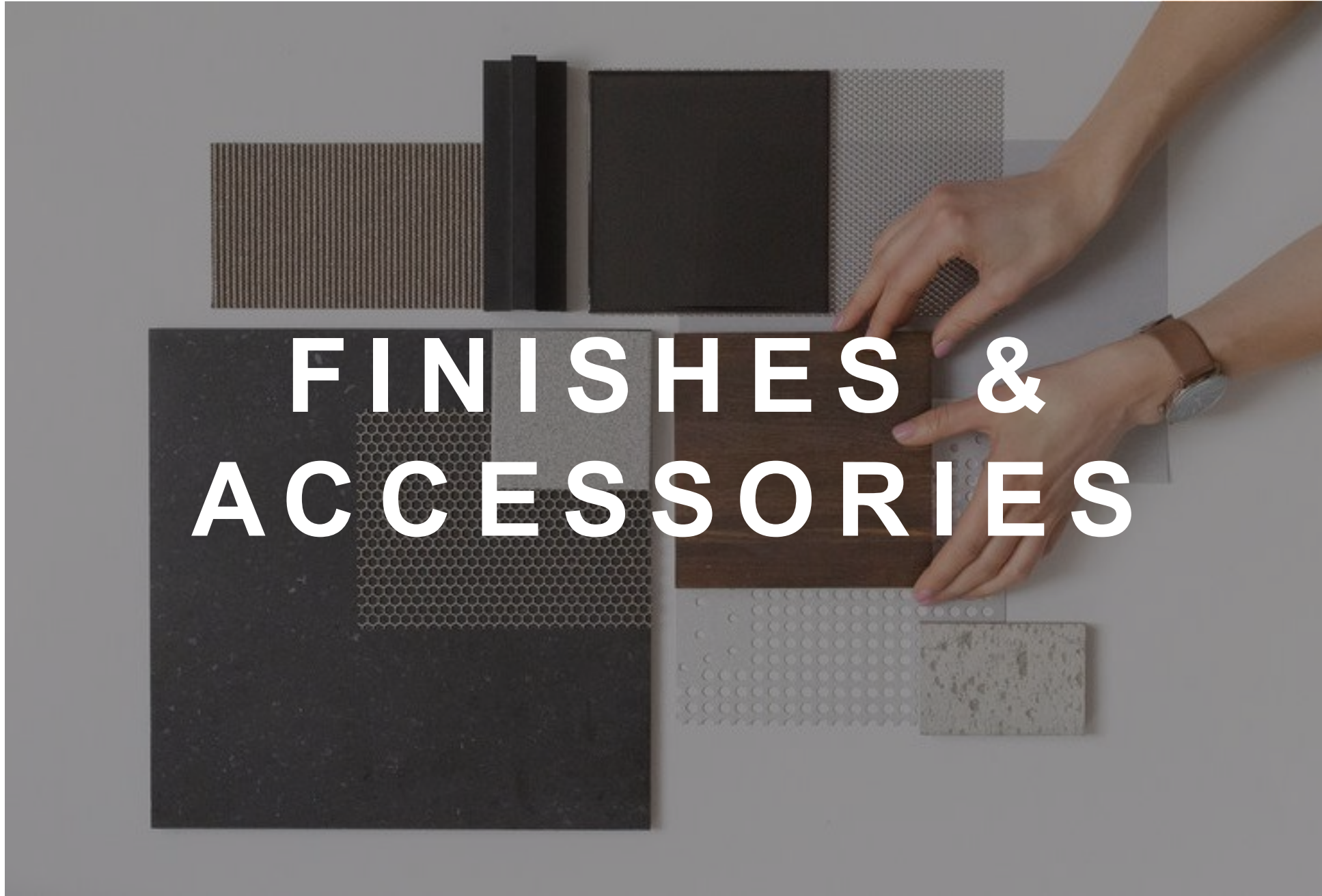
Start a conversation with Siyakhula Elevators today, we will assess your requirements, talk you through our available options and ensure we meet your lift solution needs.

+27 11 894 8352 – South Africa

+27 82 667 4964 – Mobile sales

sales@siyakhulaelevators.co.za

www.siyakhulaelevators.co.za



AVAILABLE FINISHES



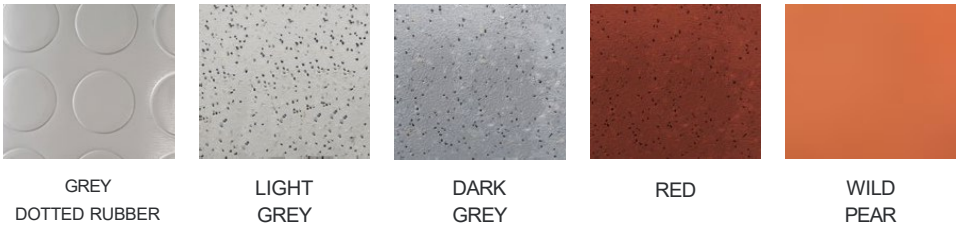
CABIN WALLS



GREY STANDARD TRANSPARENT GLASS BEIGE STANDARD BLUE STANDARD SMOKY GREY GLASS MAPLE STANDARD WHITE OPACO CHERRY STANDARD POLISHED LINEN SPECIAL RAL ON DEMAND



CABIN FLOOR



GREY DOTTED RUBBER LIGHT GREY DARK GREY RED WILD PEAR



SUPPORTING STRUCTURES



7040 STANDARD RAL 1013 LIGHT IVORY RAL 9023 PEARL DARK GREY RAL 7016 GREY ANTHRACITE SPECIAL RAL ON DEMAND



CABIN WALLS, DOORS & SUPPORTING STRUCTURE FINISHES

EXPERT POWDER COATED SURFACES IN MOST RAL COLOURS



When a more specific finish is needed we offer electric powder coated RAL colours. Our powder coated surfaces can be more resistant to chipping, scratching, fading, and wearing than other finishes, meaning it is extremely durable. The process is also environmentally friendly as virtually no pollutants are released into the air.



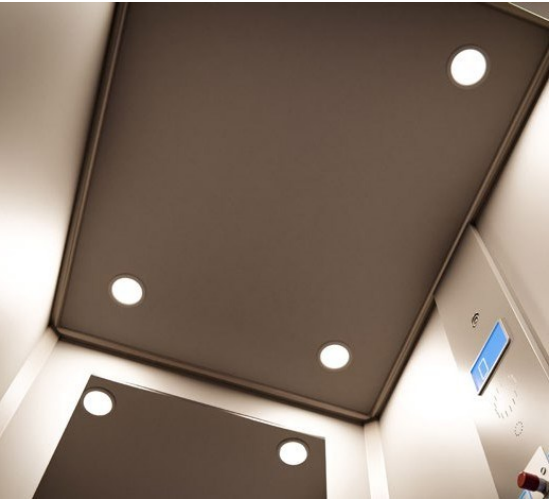
ELEGANT LIGHTING SOLUTIONS



L.E.D BAR



STARRY SKY LIGHTING
On request only



4 L.E.D SPOTLIGHTS



LANDING & CABIN DOORS
**DIFFERENT DOOR
 OPTIONS FOR ANY
 SPACE**

Whether you are limited on space or require a certain aesthetic we provide a range of door options that offer different opening and usage. They can be configured with different finishes and RAL painted to match any environment.

Our telescopic doors are available with a smoke and fire rating of up-to 120 minutes under European standard. Our swing doors with large vision panel is not rated for fire or smoke. .



FIRE RATED




SMOKE RATED

TELESCOPIC (LANDING & CABIN)

AVAILABLE IN 2,3 AND 4 PANEL OPTIONS



 TELESCOPIC WITH SOLID PANELS
 Fire and smoke on request only




TELESCOPIC WITH FRAMED GLASS




2 PANEL SWING WITH PARTIAL FRAMED GLASS

SWING DOORS (LANDING ONLY)



 SOLID PANEL
 Fire and smoke on request only

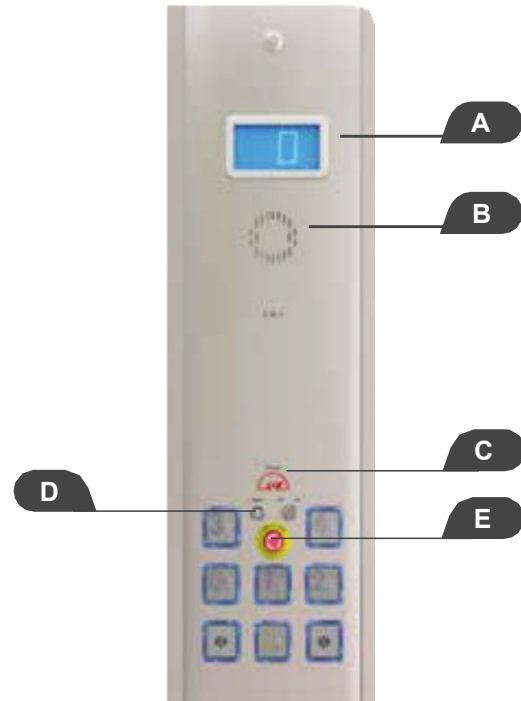


 VISION PANE
 Fire and smoke on request only

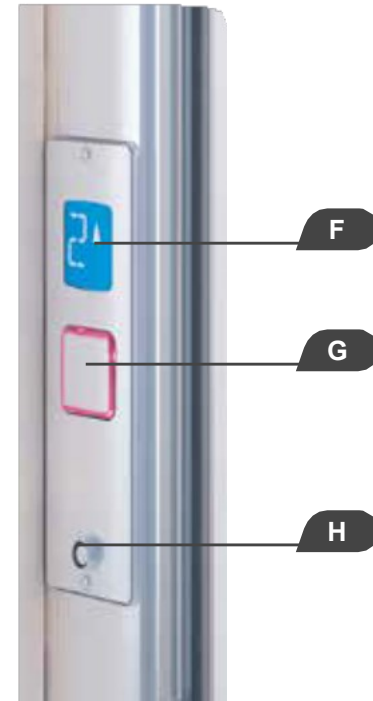


LARGE VISION PANEL

CONTROLS PANELS



CABIN
CONTROL PANEL



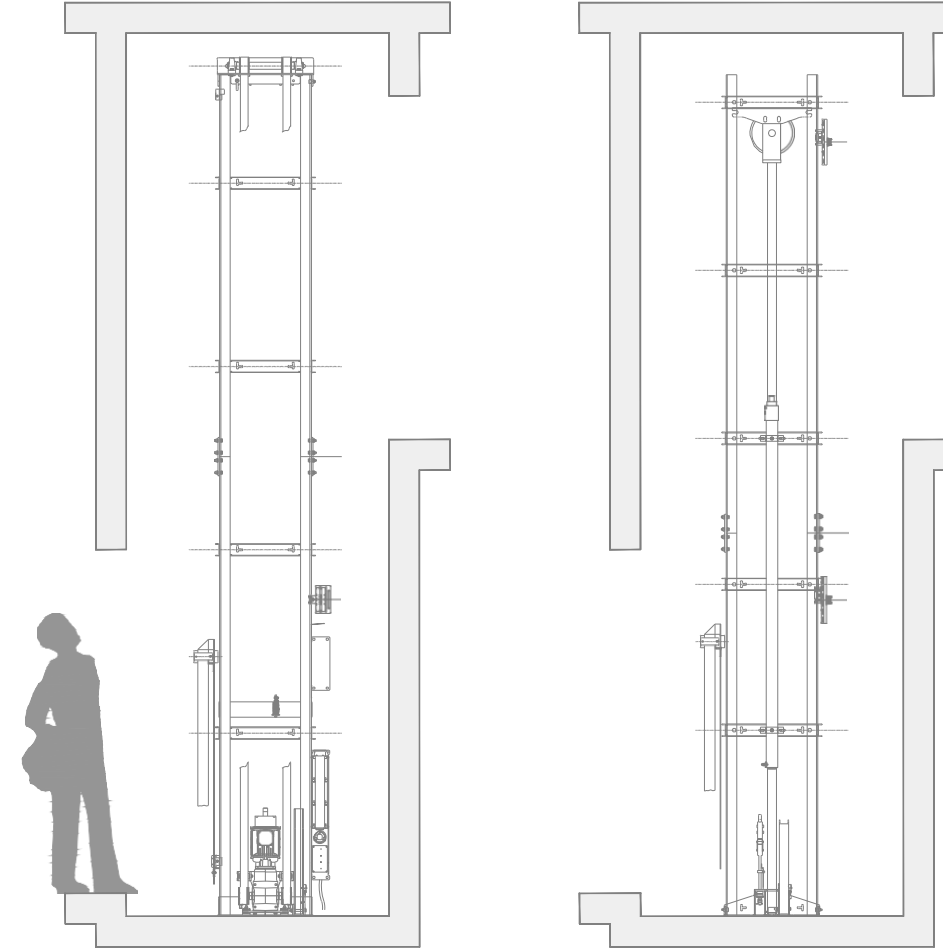
LANDING
CONTROL PANEL

ON BOARD

- A. DISPLAY (OPTIONAL)
- B. LOUDSPEAKER (OPTIONAL)
- C. LOAD INDICATOR
- D. I-BUTTON, FOR ELECTRONIC ACCESS FLOOR CONTROLS
- E. ALARM PUSHBUTTON

FLOOR

- F. LCD DISPLAY WITH TRAVEL INDICATOR (OPTIONAL)
- G. CALL BUTTON: GREEN WHEN LIFT IS FREE, RED WHEN BUSY
- H. I-BUTTON, FOR ELECTRONIC ACCESS CONTROL



TRACTION
DRIVE SYSTEM

HYDRAULIC
DRIVE SYSTEM

DRIVE OPTIONS SUITED TO YOU

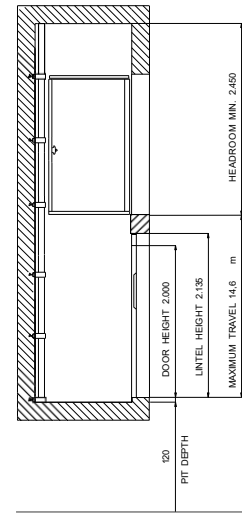
Our electric traction lift is suitable for most home and public applications. The belt drive traction system ensures that this through-floor lift is almost silent in operation, which is achieved by just one touch of a button, exactly the same way as a passenger lift.

For a greater capacity or specific use cases we offer an hydraulic drive system that easily accommodates every load up to 600kg..

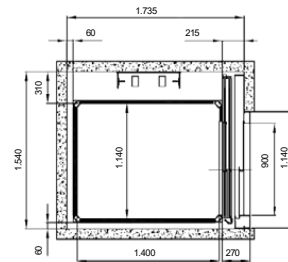
We work with you to ensure the choice you make is the right one.

SPECIFICATIONS

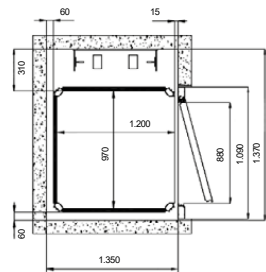
DIMENSIONS AND OVERALL SPACES



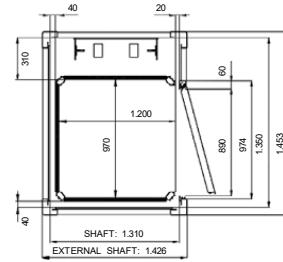
WITH TELESCOPIC DOORS



MASONRY SHAFT



SUPPORTING STRUCTURE

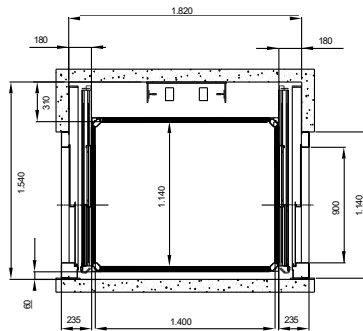


ECO HL VERSION (HEAVY LOAD)

THE ECO HL VERSION (HEAVY LOAD) HAS A HIGHER LOAD CAPACITY: 500 kg.

THE FINISHES AVAILABLE FOR THE VERSION OF HL ARE THE SAME OF ECO LIFT; THIS SOLUTION IS PROVIDED WITH A MORE POWERFUL ENGINE (2.2 kW) AND THE STRUCTURE IS STRONGER AND MORE DURABLE. THE PLATFORM SIZES AVAILABLE FOR THIS MODEL ARE: 1.460x1.170 mm AND mm 1.300x1.030.

AS AN OPTION, HL VERSION CAN BE SUPPLIED WITH A COUNTERWEIGHT (150 Kg ONLY), WHICH MAKES IT IDEAL FOR THE MOST INTENSIVE USES.



DATA IS A GUIDELINE AND NOT BINDING. SIYAKHULA ELEVATORS RESERVES THE RIGHT TO MAKE ANY CHANGES IT CONSIDERS APPROPRIATE.

STANDARD CONFIGURATIONS

CABIN WITH "COLOR SERIES" GREY WALLS (ALTERNATIVE CHOICES: BEIGE, BLUE, MAPLE, CHERRY)

PLATFORM "RUBBER SERIES" WITH GREY STAMPS

ON-BOARD AND ON THE FLOOR 50 mm BUTTONS WITH BRAILLE, WITHOUT DISPLAY

"ENERGY SAVING" WITH LED BAR CEILING

HOLLOW VENEERED DOORS WITH WINDOW

IN CONFORMITY WITH THE MACHINERY DIRECTIVE EC 42-2006

TECHNICAL DATA

ECO LIFT - GENERAL FEATURES

A	DRIVE SYSTEM AND AT-THE-GROUND CONTROL	
B	BELT DRIVE	
C	DRIVE MOTOR	1,5 kW THREE-PHASE 220 V 50 H z
D	ELECTRIC TRACTION	
E	SOFT START/STOP SYSTEM	
F	VOLTAGE SUPPLY	24 V dc
G	MECHANICAL KEY ENABLING ON-BOARD KEYPAD	
H	NO. 6 ACCESSES MAXIMUM	
I	NO. 2 ACCESSES TO THE FLOOR MAXIMUM	
J	TRICAL SAFETY LOCKS	
K	ON FLOOR CONTROLS WITH "SIMPLE TOUCH"	
L	PIT	120 mm FOR MASONRY SHAFT 140 mm FOR STRUCTURE
M	TECHNICAL DIMENSIONS (ENGINE, BELTS)	310 mm
N	TESTATA MINIMA STANDARD	2.450 mm
O	HEADROOM MINIMUM STANDARD	2.600 mm
P	PLATFORM SIZES AVAILABLE	
Q	2 STANDARD	1.400 x1.100 - 1.250x1.000
R	SPECIAL SIZES AVAILABLE UPON REQUEST	

OPTIONS

I-BUTTON (ELECTRONIC KEY) TO MANAGE INDEPENDENT ACCESSES

VOICE ANNOUNCER

TO THE INCOMING FLOOR

GONG TO THE INCOMING FLOOR

AUTO DIALER WITH 5 NUMBERS IN MEMORY

DISPLAY IN THE CABIN

DISPLAY ON THE FLOOR CONTROL PANEL

HANDLE FITTED TO CABIN WALL FOR USE IN PUBLIC PLACES AND FOR PEOPLE WITH DISABILITIES

SLIDING DOORS ON CABIN AND AT ALL FLOORS

POWER DOOR OPERATOR FOR SWING DOORS

FIRE RATED DOORS

VERTICAL OR HORIZONTAL MIRROR

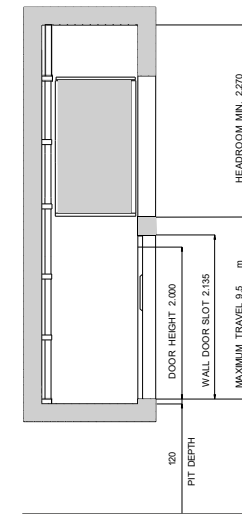
ECO LIFT - INSIDE THE CABIN

A	INFRARED BARRIERS ON EACH SIDE OF ENTRY AND IN THE ABSENCE OF WALLS
B	DEVICE OF COMMUNICATION WITH OUTSIDE THE CABIN
C	OVER LOAD INDICATOR
D	50 X 50 mm BUTTONS WITH MECHANICAL SHUTTER AND INDICATION OF THE FLOOR IN ADDITION TO STANDARD BRAILLE
E	ON BOARD CONTROLS HEIGHT COMPLIANT TO EN81-41
F	ILLUMINATED BUTTONS (WITH COLOR IDENTIFICATION OF THE FUNCTION)
G	EMERGENCY BUTTON
H	"ENERGY SAVING" LED BAR LIGHTS
I	ON BOARD PUSH-BUTTON PANEL WITH DEAD-MAN'S CONTROLS-ALWAYS EQUIPPED WITH INFRARED PHOTOCELLS BARRIERS
J	"SIMPLE TOUCH" OPERATION (UNIVERSAL MANOEUVRE) WITH WALLS AND DOOR IN THE CABIN

CAPACITY	UP TO 400 kg
MAXIMUM TRAVEL	5 STOPS (14.6M)
SPEED	0,15 m/s

SPECIFICATIONS

DIMENSIONS AND OVERALL SPACES



*MASONRY SHAFT

CABIN	L	900	1.250	1.400	770	850	1.250
	P	850	1.000	1.100	950	1.250	1.250
WALL SHAFT	LH	930	1.280	1.430	800	800	1.280
	PH	1.090	1.240	1.340	1.190	1.490	1.490

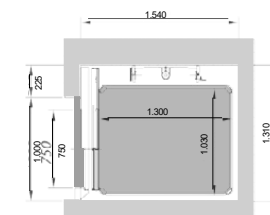
*STRUCTURE

CABIN	L	900	1.250	1.400	850	1.250
	P	850	1.000	1.100	1.250	1.250
WALL SHAFT	LA	1.045	1.395	1.545	995	1.395
	PA	1.195	1.345	1.445	1.595	1.595

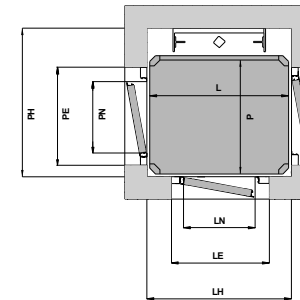
L: CABIN WIDTH
P: CABIN DEPTH
LH: MASONRY ROOM WIDTH
PH: MASONRY ROOM DEPTH
LA: STRUCTURE WIDTH
PA: STRUCTURE DEPTH
LN-PN: DOORWAY WIDTH
LE-PE: DOOR ENCUMBRANCE

NB: ADD 45 mm FOR EACH ADDITIONAL CABIN WALL TO THE COMPARTMENT DIMENSIONS, AND 100 mm FOR THE FOLDING DOOR ON THE SIDE OF THE CABIN.

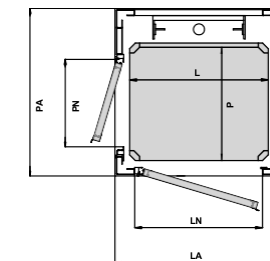
WITH TELESCOPIC DOORS



MASONRY SHAFT*



STRUCTURE*



DATA IS A GUIDELINE AND NOT BINDING. SIYAKHULA ELEVATORS RESERVES THE RIGHT TO MAKE ANY CHANGES IT CONSIDERS APPROPRIATE.

GENERAL FEATURES

VERSATILE HYDRAULIC LIFT

CUSTOMIZABLE TO THE NEEDS OF THE USER AND THE BUILDING

IDEAL BOTH FOR RENOVATION PROJECTS (EASY TO INSTALL IN EXISTING SHAFTS) AND IN NEW INSTALLATIONS, SINCE SPECIAL BUILDING WORKS SUCH AS AN EXTRA ROOM TO HOUSE MACHINERY OR A PIT UNDERNEATH THE LIFT, ARE NOT REQUIRED THE PIT REQUIRED IS TRULY NEGLIGIBLE, SINCE A RECESS JUST 12 CM DEEP IS ALL THAT IS NEEDED

THE LIFT RUNS ON THE STANDARD VOLTAGE OF 220/240 V AND ITS POWER CONSUMPTION IS 1.8 kW

IN CONFORMITY WITH THE MACHINERY DIRECTIVE EC 42-2006

THE INSTALLATION IS AUTOMATIC WHEN THERE ARE TELESCOPIC DOORS INSIDE THE CABIN

TECHNICAL DATA

EASY MOVE

A	WORKING LOAD	UP TO 400 kg
B	TRAVEL	9,5 m
C	SPEED	0,15 m/s
D	PIT	120 mm FOR MASONRY SHAFT 140 mm FOR STRUCTURE
E	CABIN "ENCLOSED" WITH WALLS OR INFRARED BARRIERS	
F	"SIMPLE TOUCH" CALLING TO FLOOR	
G	ARRIVAL AND DEPARTURE WITH SOFT START/STOP SYSTEM	
H	DEVICE FOR COMMUNICATION WITH OUTSIDE OF CABIN	
I	AUTOMATIC SAFETY LEVELLING WITHIN	+/- 20 mm
J	CERTIFIED SAFETY VALVE	
L	ELECTRIC LOCKS WITH CERTIFICATION	UNI EN 81-2

EASY MOVE - ELECTRICAL SYSTEM

POWER	1,8 kW
MAINS VOLTAGE	230 V-MONO
MOTOR POWER SUPPLY VOLTAGE	230 V
AUXILIARY POWER SUPPLY VOLTAGE	24 V

PLATFORM DIMENSIONS

1.400x1.300 - 1.600x900
1.800x900 - 2.000x900
2.200x900

1.400x1.400 - 1.600x1.000
1.800x1.000 - 2.000x1.000
2.200x1.100

HEAVY DUTY: FOR HIGHER LOAD CAPACITY

ECO HD

WHEN THE INSTALLATION REQUIRES A LIFT ABLE TO TAKE LOADS OF CONSIDERABLE SIZE AND WEIGHT, THE ECO HEAVY DUTY ALLOWS THE TRANSPORTATION OF TROLLEYS, BEDS AND OTHER OBJECTS WHICH REQUIRE EXTRA SPACE, WITHOUT DIFFICULTY AND WHILE MAINTAINING A STYLISH APPEARANCE.



RATED LOAD	FROM 500 TO 600 kg
MAXIMUM TRAVEL	8,5 m



SIYAKHULA ELEVATORS



+27 11 894 8352 – South Africa

+27 82 667 4964 – Mobile Sales



sales@siyakhulaelevators.co.za



www.siyakhulaelevators.co.za