



Minimum space requirements

# maisonLIFTS



Low energy consumption



Elegant & convenient



Premium design



Outstanding quality

## Home Solutions



**KLEMMANN**  
Your 1st Choice in Lifts





## Our story & heritage

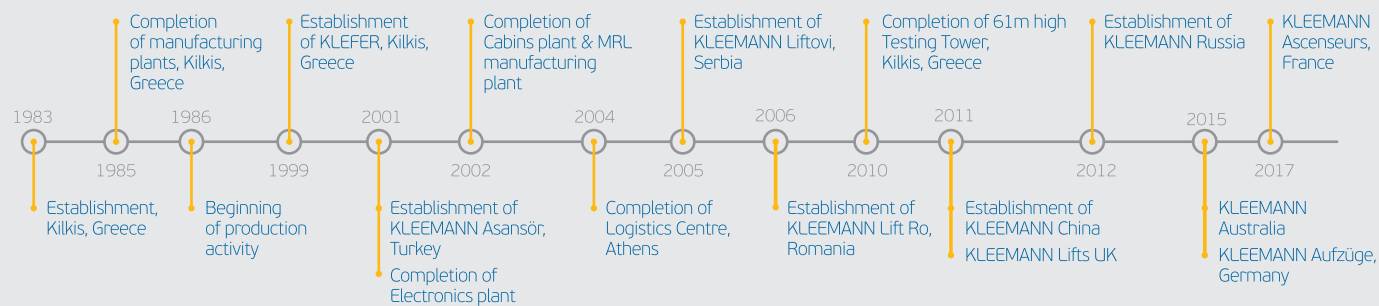
Founded in 1983 in Kilkis, Greece, KLEEMANN is one of the major lift companies in the European and global market, providing any type of residential or commercial passenger and freight lifts, escalators, moving walks, accessibility and marine solutions, parking systems and components.

Its distribution network expands to more than 100 countries.

KLEEMANN stands for innovation in design and technology, for flexibility and pragmatic thinking, for quality products and dedicated service and support.

Integrated manufacturing facilities, highly trained workforce and state-of-the-art IT systems and logistics support enable KLEEMANN to deliver reliable, highly personalised solutions, whatever the challenge.

### KLEEMANN timeline



WE ARE THE GLOBAL LIFT SUPPLIER WITH THE BEST PRODUCT RANGE IN THE WORLD



WE ARE EXPERTS IN SPECIAL PROJECTS



WE OFFER WORLD CLASS DESIGN



# Development in China

KLEEMANN China was  
founded in Kunshan in

**2011**

The tower raises at

**100**  
meters height

Premium quality according to

**European**  
standards

Gross floor area of the building

**19,300**  
square meters (production, lo-  
gistics, offices and testing tower)

Manufacturing capacity

**5500**  
units/year

Global sourcing and worldwide  
funneling under product quality  
control, compliant with

**EN 81.1**



# Global perspective



We expand in  
more than  
**100**  
countries around  
the world

KLEEMANN Group facilities  
cover an area of 255.000 m<sup>2</sup>  
in land and 140.000 m<sup>2</sup>  
in buildings globally.

● MANUFACTURING FACILITIES ● LOCAL PRESENCE



## Eco-friendly

Energy saving product which reduces CO<sup>2</sup> emission up to 60% using a 1100W motor with only 6 Amperes rated current, stand-by-mode and led lighting.

## Low noise levels

Gearless motor and state-of-the-art inverter combined with innovative design guarantees remarkably low noise levels inside and outside the cabin. The noise level inside the cabin (measured according to ISO 18738) during the lift operation reaches 52-54 dB (A).

## Outstanding ride quality

Premium quality and exceptional ride comfort are delivered by both a gearless motor and a state-of-the-art inverter.

## Self-supported shaft

Is offered with aluminum construction, self-supported or fitted on to the wall, where concrete shaft is not available.

## Emergency evacuation

In the unlikely event of power failure, the emergency evacuation system ensures the safe transportation of passengers to the nearest floor.



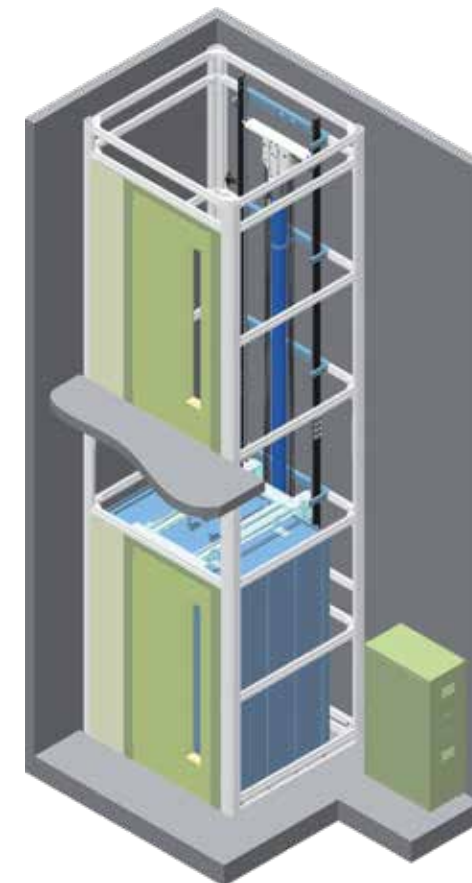
## Maison T Plus SP



### Technical Specifications

Rated Load (kg)	320-400
Suspension	2:1
Machine room	MRL
Max travel (m)	16
Max number of stops	6
Max rated speed (m/s)	0,15 / 0,3 / 0,4
Min pit depth (mm)	250
Min clear headroom (mm)	2600
Max entrances	3
Panoramic option	Yes
Door Option	Automatic / Semi-automatic
Directives & Standards	GB/T21739-2008, EN81.41, EN81.1

## Maison LIFT Basic

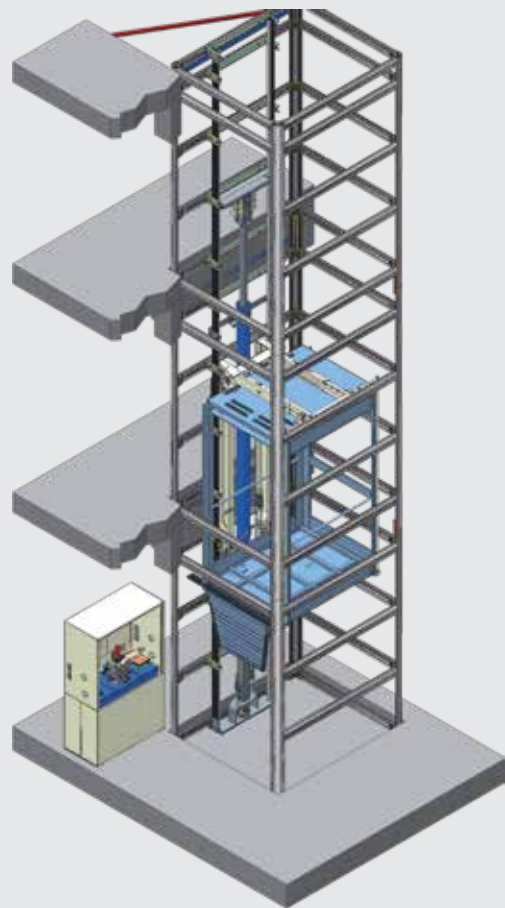


### Technical Specifications

Rated Load (kg)	200-450
Suspension	2:1
Machine room	MRL with controller cabinet
Max travel (m)	15
Max number of stops	4
Max rated speed (m/s)	0,15
Min pit depth (mm)	80
Min clear headroom (mm)	2300
Max entrances	3
Panoramic option	No
Door Option	Semi-automatic
Directives & Standards	2006/42/EC



## MaisonLIFT Plus



### Technical Specifications

Rated Load (kg)	180-630
Suspension	2:1
Machine room	MRL with controller cabinet
Max travel (m)	19
Max number of stops	8
Max rated speed (m/s)	0,52
Min pit depth (mm)	300
Min clear headroom (mm)	2450 for semi-automatic door 2650 for automatic door
Max entrances	3
Panoramic option	Yes
Door Option	Semi-automatic / Automatic
Directives & Standards	2014/33/EU EN81-20/50, EN81-2, EN81-21, 2006/42/EC

## Maison One



### Technical Specifications

Rated Load (kg)	Up to 385
Suspension	2:1
Machine room	MRL (MR)
Max travel (m)	7
Max number of stops	3
Max rated speed (m/s)	0,15
Min pit depth (mm)	120
Min clear headroom (mm)	2300
Max entrances	2
Panoramic option	No
Door Option	Semi-automatic
Directives & Standards	2006/42/EC



## World class design

Since 2007, KLEEMANN has launched its creative research, in cooperation with the industrial designer Andreas Zapatinas. That was the beginning of a new era. Through this rewarding partnership, new technical and aesthetic solutions were explored and developed.

Inspired by human needs, KLEEMANN focuses on shaping new space qualities that lift the passenger's mood and stimulates interaction inside the elevator.



## Our cabins

KLEEMANN Design is about life. Going far beyond the elevator design, KLEEMANN cultivates a whole design culture that elevates each and every aspect of its operation. It is a way of thinking, a mindset of innovation.

Rather than thinking of the elevator as a box, KLEEMANN Design thinks of it as a unique space in the building and transforms the whole elevator experience into a new value for the people, the building, the environment.



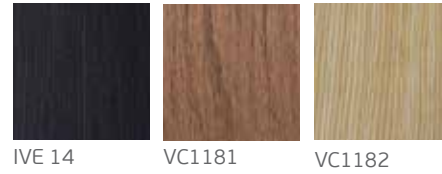


CLASSIC

# A510 SP



**WALL FINISHES**  
Wood veneers



- Ceiling** O14
- Walls** Wood veneer IVE 14
- Corners-Skirtings** Stainless steel mirror
- Floor** Artificial granite Regal white SP
- Handrail** K1
- Mirror** ¾ height / full width
- Car Operating Panel** KCH 1000

Colours may differ slightly from those shown in the manual owing to the limitations of the printing process.



CLASSIC

# A520 SP



**WALL FINISHES**  
Artificial leather



- Ceiling** O3
- Walls** Artificial leather BL-7033
- Corners-Skirtings** Stainless steel mirror
- Floor** Ceramic tile GP31 Black SP
- Handrail** K7
- Mirror** Full height /full width
- Car Operating Panel** KCH 1000

Colours may differ slightly from those shown in the manual owing to the limitations of the printing process.



CLASSIC  
A530 SP

WALL FINISHES  
Split panels



1635

- Ceiling O3
- Walls Split panel 1635
- Corners-Skirtings Stainless steel mirror
- Floor Ceramic tile GP21 Cream SP
- Handrail K7
- Mirror Full height / full width
- Car Operating Panel KCH 1000

Colours may differ slightly from those shown in the manual owing to the limitations of the printing process.

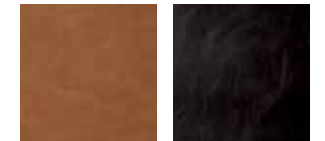
CLASSIC  
A710 SP



WALL FINISHES  
Artificial leather



BL-7033 4411 S7005



S7015 S4604

- Ceiling A710
- Walls Artificial leather S7005
- Corners-Skirtings SStainless steel satin
- Floor Laminate 8630
- Handrail K7
- Mirror Full height / half width
- Car Operating Panel KCH 1000

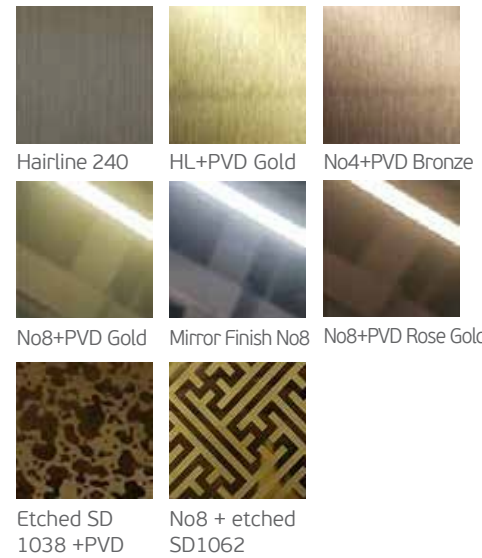
Colours may differ slightly from those shown in the manual owing to the limitations of the printing process.

# Panoramic



## WALL FINISHES

Stainless steel

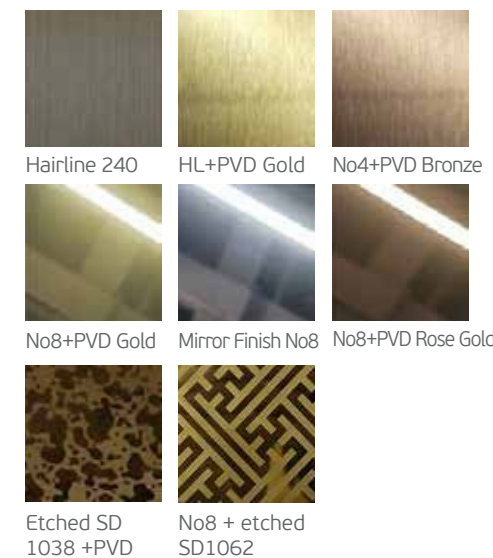


More options available.  
Please contact your sales engineer.  
Colours may differ slightly from those shown in the manual owing to the limitations of the printing process.



## WALL FINISHES

Stainless steel



**Ceiling** O10  
**Walls** Stainless steel  
 hairline 240  
**Floor** Rubber 2020T  
**Handrail** K2  
**Mirror** Half height / full width  
**Car Operating Panel** KCH 1000

More options available.  
Please contact your sales engineer.  
Colours may differ slightly from those shown in the manual owing to the limitations of the printing process.

MODERN  
LIFE

L310 SP



MODERN  
LIFE

L320 SP

WALL FINISHES

Skinplates



**Ceiling** O55  
**Walls** Skinplate PPS13  
**Corners-Skirtings** Stainless steel satin  
**Floor** Rubber 2020T  
**Handrail** K7  
**Mirror** Full height / half width  
**Car Operating Panel** KCH 1000

Colours may differ slightly from those shown in the manual owing to the limitations of the printing process

MODERN  
LIFE

L510 SP

WALL FINISHES

Glasses



**Ceiling** O10  
**Walls** B132W White glass  
**Corners- Skirtings** Stainless steel satin  
**Floor** Rubber 2020T  
**Handrail** K2  
**Mirror** Half height / full width  
**Car Operating Panel** KCH 1000



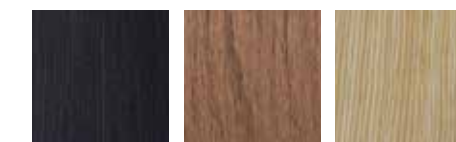


MODERN  
LIFE

# L710 SP



### WALL FINISHES Wood veneers

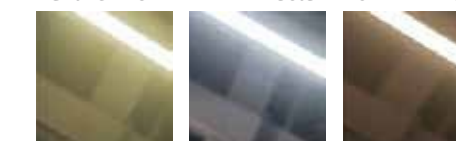


IVE 14 VC1181 VC1182

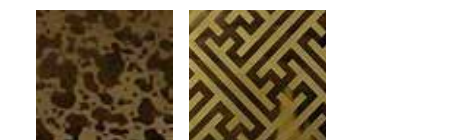
### WALL FINISHES Stainless steel



Hairline 240 HL+PVD Gold No4+PVD Bronze



No8+PVD Gold Mirror Finish No8 No8+PVD Rose Gold



Etched SD 1038 +PVD No8 + etched SD1062

**Ceiling** O14  
**Walls** Stainless steel hairline 240 - wood veneer VC1182  
**Corners- Skirtings** Hairline 240  
**Floor** Rubber 2050T  
**Handrail** K7  
**Mirror** Half height / full width  
**Car Operating Panel** KCH 1000



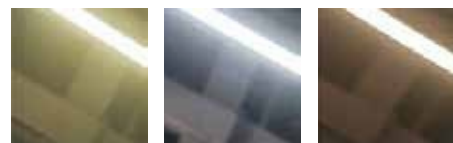
MODERN  
LIFE

# L530 SP

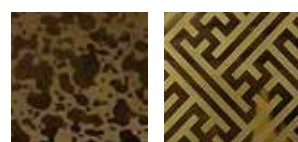
### WALL FINISHES Stainless steel



Hairline 240 HL+PVD Gold No4+PVD Bronze



No8+PVD Gold Mirror Finish No8 No8+PVD Rose Gold



Etched SD 1038 +PVD No8 + etched SD1062

**Ceiling** O14  
**Wall** Mirror finish No8 (back)  
- Stainless steel hairline 240 (sides)  
**Corners- Skirtings** Mirror finish No8  
**Floor** Laminate 8096  
**Handrail** K7  
**Mirror** Half height / full width  
**Car Operating Panel** KCH 1000

More options available.  
Please contact your sales engineer.

Colours may differ slightly from those shown in the manual owing to the limitations of the printing process.

FUTURE  
TREND

# T110 SP



## WALL FINISHES Melamines



**Ceiling** T110  
**Walls** Melamine A402 SP  
**Door posts** Stainless steel satin  
**Floor** Artificial granite Regal white SP  
**Handrail** K1  
**Mirror** Full height / full width  
**Car Operating Panel** KCH 1000

Colours may differ slightly from those shown in the manual owing to the limitations of the printing process

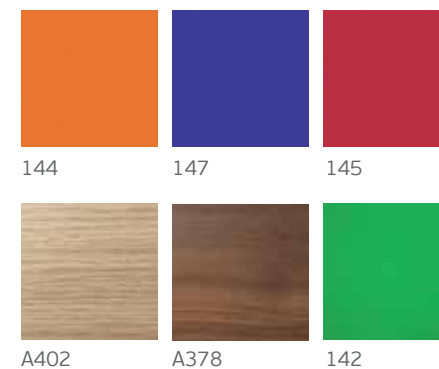


FUTURE  
TREND

# T120 SP



## WALL FINISHES Melamines



**Ceiling** T120  
**Walls** Melamine A378 SP  
**Door posts** Stainless steel satin  
**Floor** Artificial granite Regal white SP  
**Handrail** K1  
**Mirror** Full height / full width  
**Car Operating Panel** KCH 1000



Wall finishes Painted RAL  
Ceiling T310

Ceiling detail



FUTURE  
TREND  
T310 SP



More options available.  
Please contact your sales engineer.



FUTURE  
TREND  
T710 SP



Wall finishes Painted RAL  
Ceiling T710



Ceiling detail

More options available.  
Please contact your sales engineer.  
Colours may differ slightly from  
those shown in the manual owing to  
the limitations of the printing process.



# Customised design

We have a passion to design cabins that combine innovation, class and functionality. With a solution-driven creative force, our highly specialised design team goes beyond standard, creating custom solutions even for the most challenging of your projects. Offering you flexibility and the best of design solutions, we work with you at all stages providing a totally elevated customer experience.

Work with our specialised design team to create the aesthetics of your ideal cabin



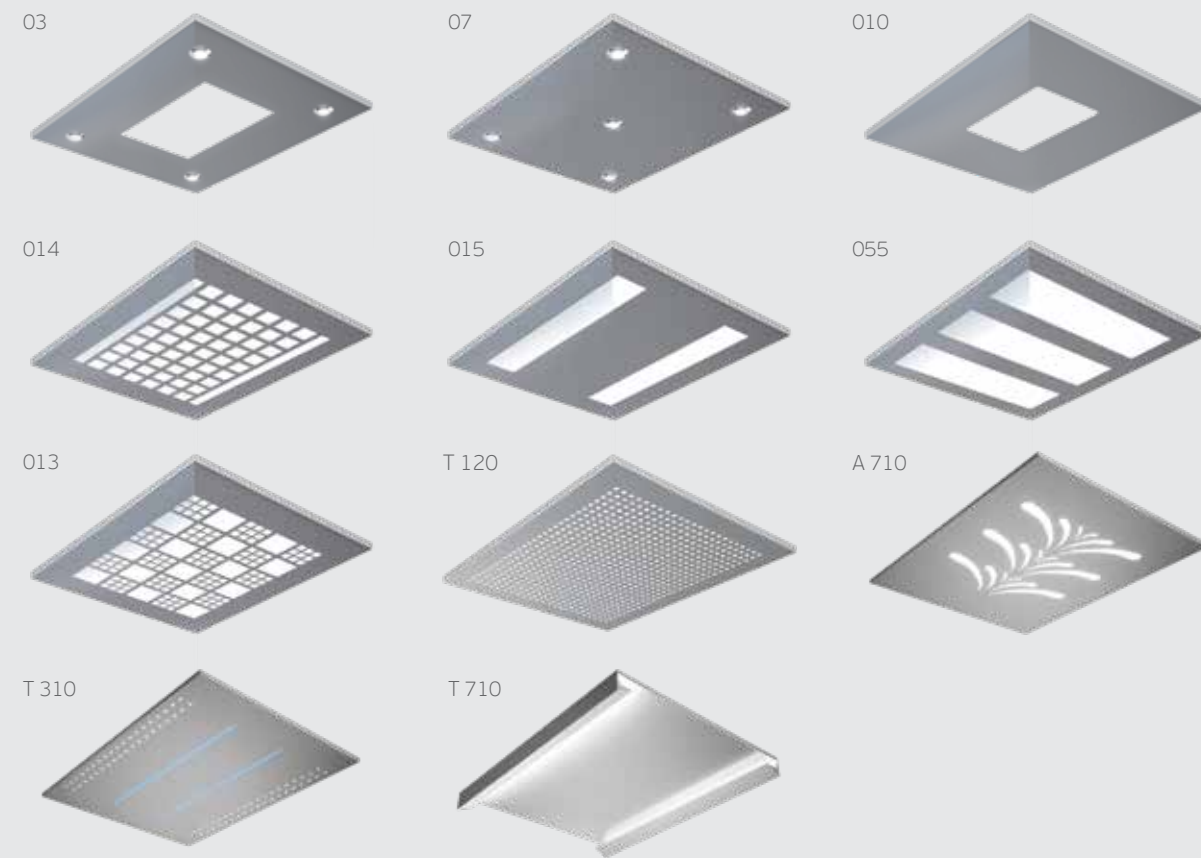




# Interior Materials

Combine any colours, materials, lighting and fixtures from our ready-made design lines with numerous styles for walls, ceilings and floors.

## Ceilings



## Handrails

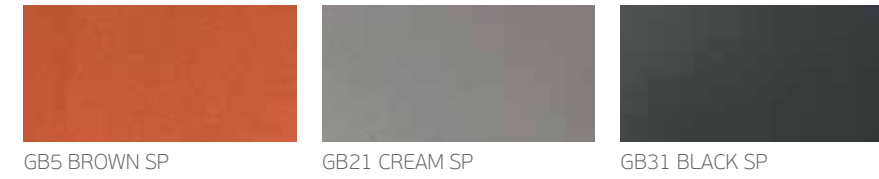


## Floors

### Rubber



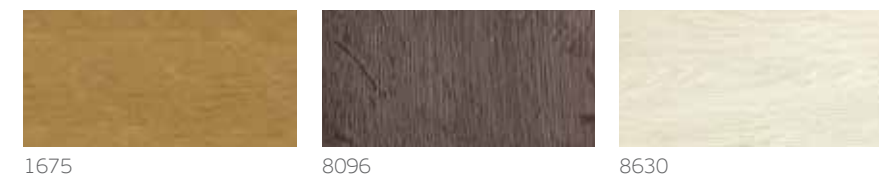
### Ceramic Tiles



### Artificial granites



### Laminates





# Cabin Operating Panels

Flush mounted



KCH full height

KCH LCD Blue Line full height

KCH TFT Blue Line full height

KCH C300 3/4 height

Surface mounted

Touch sensitive



KCH SM BA SP 3/4 height

KCH 1000 SP horizontal

KCH TSC Black full height/  
KCH TSC

# Indicators

Flush mounted



LCH TFT

LCH LCD

LCH C300

# Landing Operating Panels

Flush mounted



LCH 102 Dot matrix

LCH 102 LCD

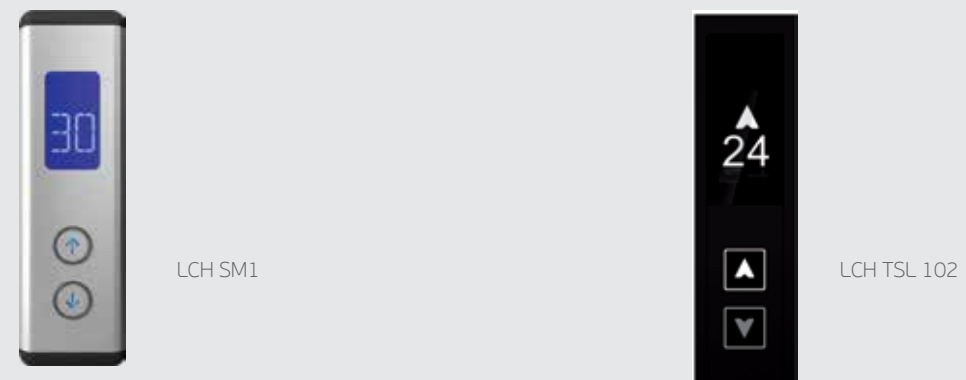
LOP 102 TFT

LCH C302

LCH C342

Surface mounted

Touch sensitive



LCH SM1

LCH TSL 102



# Special Features

## Magic Mirror

The Magic Mirror is an LCD display, which is functioning as a normal display while it is activated and as a full mirror while it is deactivated.  
The surface glass/mirror is constructed to be combined with the LCD display and it complies with the necessary surface, hardness and tension requirements.



## Virtual Window

Virtual Window is one of the world's first immersive architecture & experience design elevator products. The display adapts the viewer's point of view in real time, according to the elevator's movement. The patent pending Virtual Window software detects the movement of the elevator car - so it recognises whether it is stationary or moving, its direction, speed and location. This analysis is translated to the movement of the display's content.



# Doors

Solutions for all dimensions, with wide range of options, easy to install and adjust.



Stainless Steel Satin



Semi-automatic



Big Vision



Full Glass



# Projects around the world

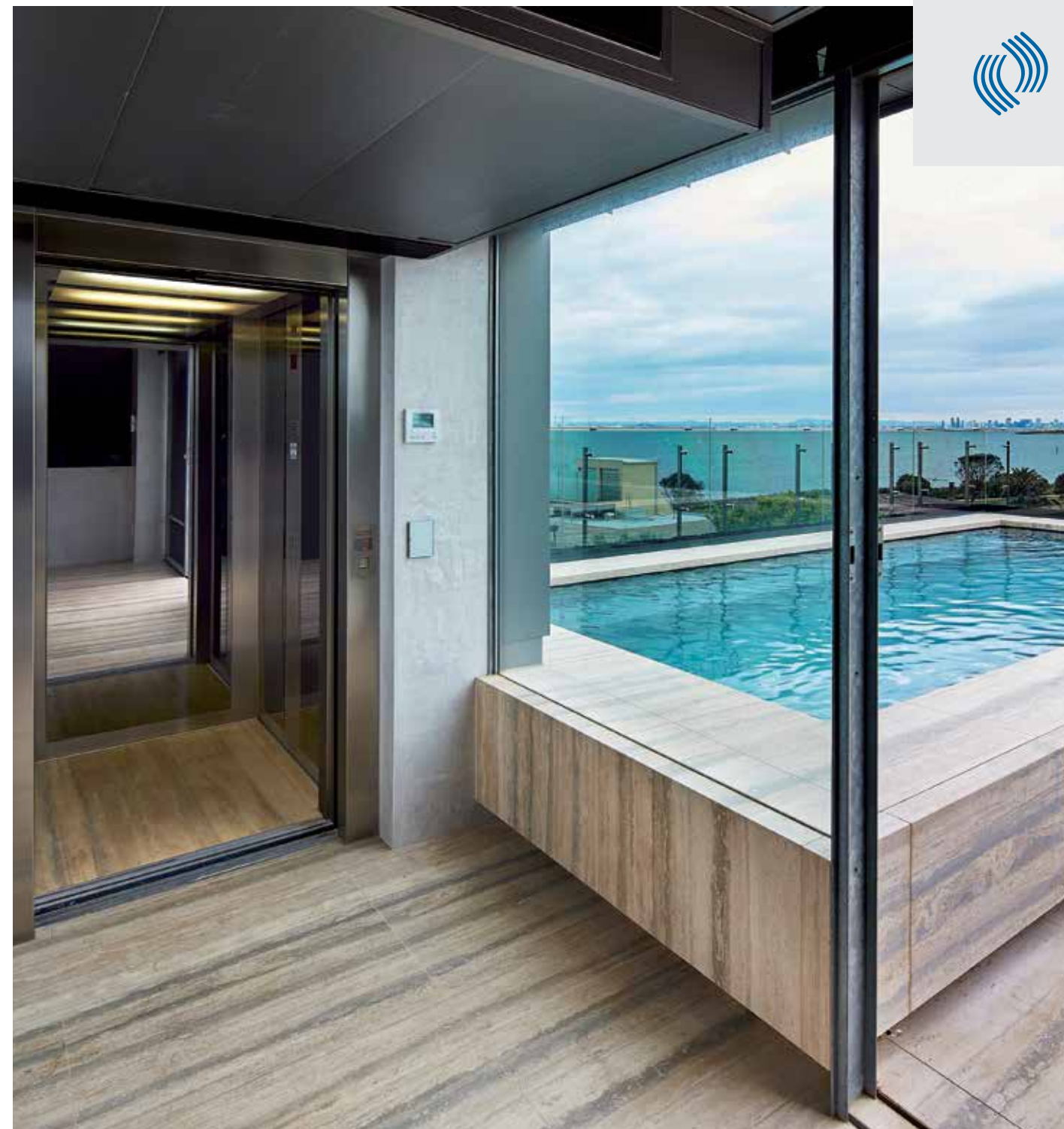
Being a reliable and innovative brand, renowned for specialising in unique and customised solutions, KLEEMANN is proud of its projects all around the world.

Through the years, KLEEMANN has developed a wide global network of customers and has fairly gained the position as a most valued lift manufacturer worldwide. KLEEMANN owns manufacturing facilities in Greece, Serbia and China and a wide network of companies around the world.

Thanks to the credibility, special innovative design and flexible and prompt service, as well as the importance to continuous development, KLEEMANN has earned the preference of the market.

For the people in KLEEMANN each project is a chance to go beyond conventional engineering and design!

KLEEMANN customers are unique and so are their projects!



## Private Residence

### SPECIFICATIONS

Country	Australia
Location	Melbourne
Type of product	Maison T Plus



## Private Residence

### SPECIFICATIONS

Country	France
Location	Paris
Type of product	Atlas Basic

## Private Residence

### SPECIFICATIONS

Country	Australia
Location	Melbourne
Type of product	MaisonLIFT Basic



## Private Residence

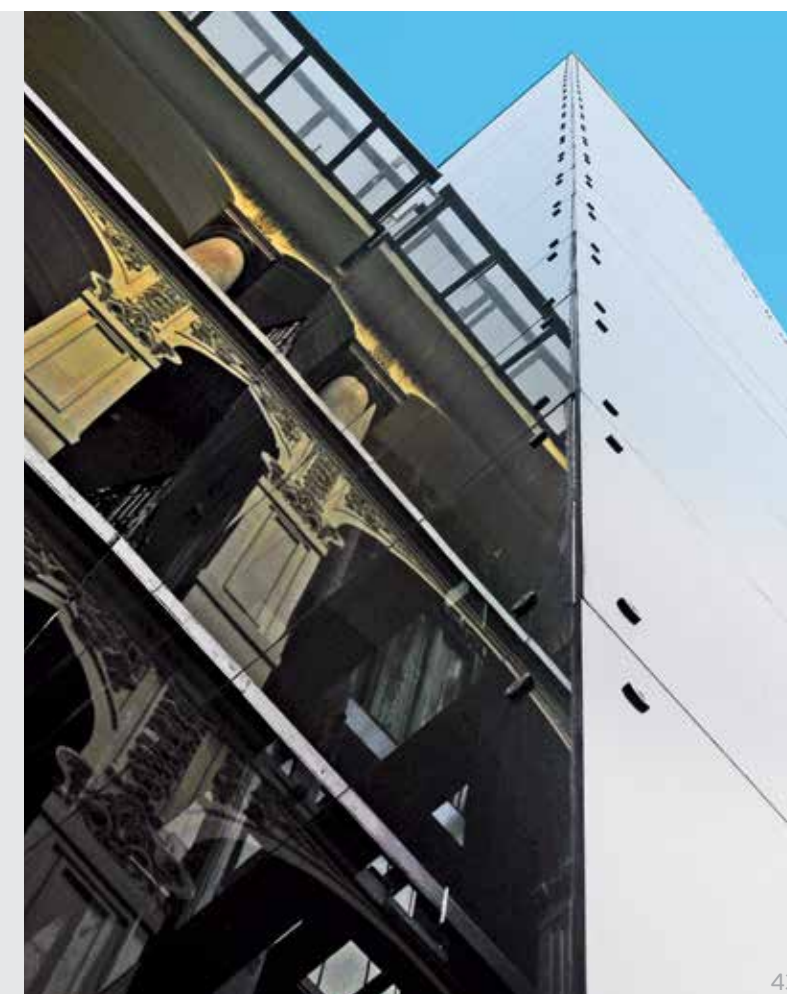
### SPECIFICATIONS

Country	Greece
Location	Katerini
Type of product	Maison LIFT

## Luxury Apartments

### SPECIFICATIONS

Country	Hungary
Location	Budapest
Type of product	Atlas MRL



  
[kleemannlifts.com](http://kleemannlifts.com)

While every effort has been to ensure the accuracy of the information in this brochure, KLEEMANN assumes no responsibility for omissions or typographical errors. Images are for demonstration purposes only. They are not suitable for construction/building purposes, nor feasibility studies.

Copyright © KLEEMANN 2019

